

Basket Granulator™ Model BR-600

LCI's BR-600 Basket Granulator is a production scale extruder that converts wetted powders into pellets of controlled size and shape.

The Basket Granulator differs from other low pressure extruders (available from LCI) because it uses gravity feed rather than screw feed. Aided only by a rotating agitator to prevent arching, wetted powder falls directly into the extrusion area.

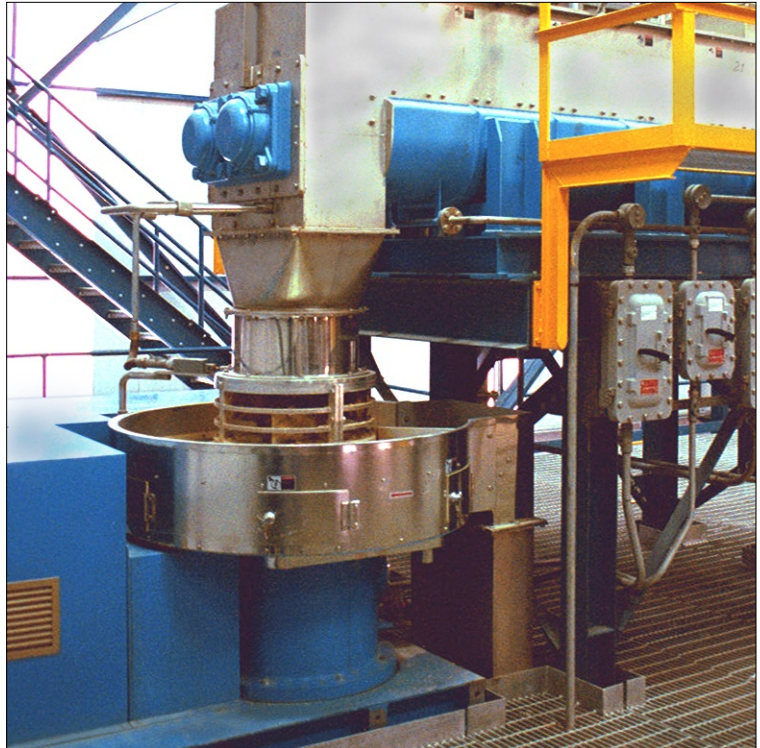
Features

- 750 - 1500 kg/hr extrusion rate
- Screen sizes capable of producing 0.6 to 1.2 mm diameter extrudates
- Adjustable gap between extrusion blade and screen allows optimizing extrusion force
- Uniform extrusion pressure across entire screen area
- Choice of extrusion blades to suit process
- Variable shaft rotation speed via mechanical variator (option: via variable speed drive)
- 30 hp motor in 460VAC/3 Phase/60 hz
- Rotating product discharge table driven by 1.5 hp motor in 460VAC/3 Phase/60 hz
- Feed hopper with safety grid
- 600 mm approximate screen diameter
- 304SS contact parts

Operation

The wet mixture is separately prepared, typically using a kneader or a pug mixer (available from LCI), and metered into the feed hopper. The material is wiped through perforated screens by extrusion blades to produce well formed cylindrical extrudates of a controlled diameter. Extrudates then fall onto a rotating table for discharge to the next processing step.

LCI Corporation is the exclusive distributor for Fuji Paudal Company, Ltd. in the Americas.



Basket Granulator Model BR-600 Dimensions (shown in mm)

Weight: 3000 kg

