



# Parts and Repair Services

*Thin-Film Processors*



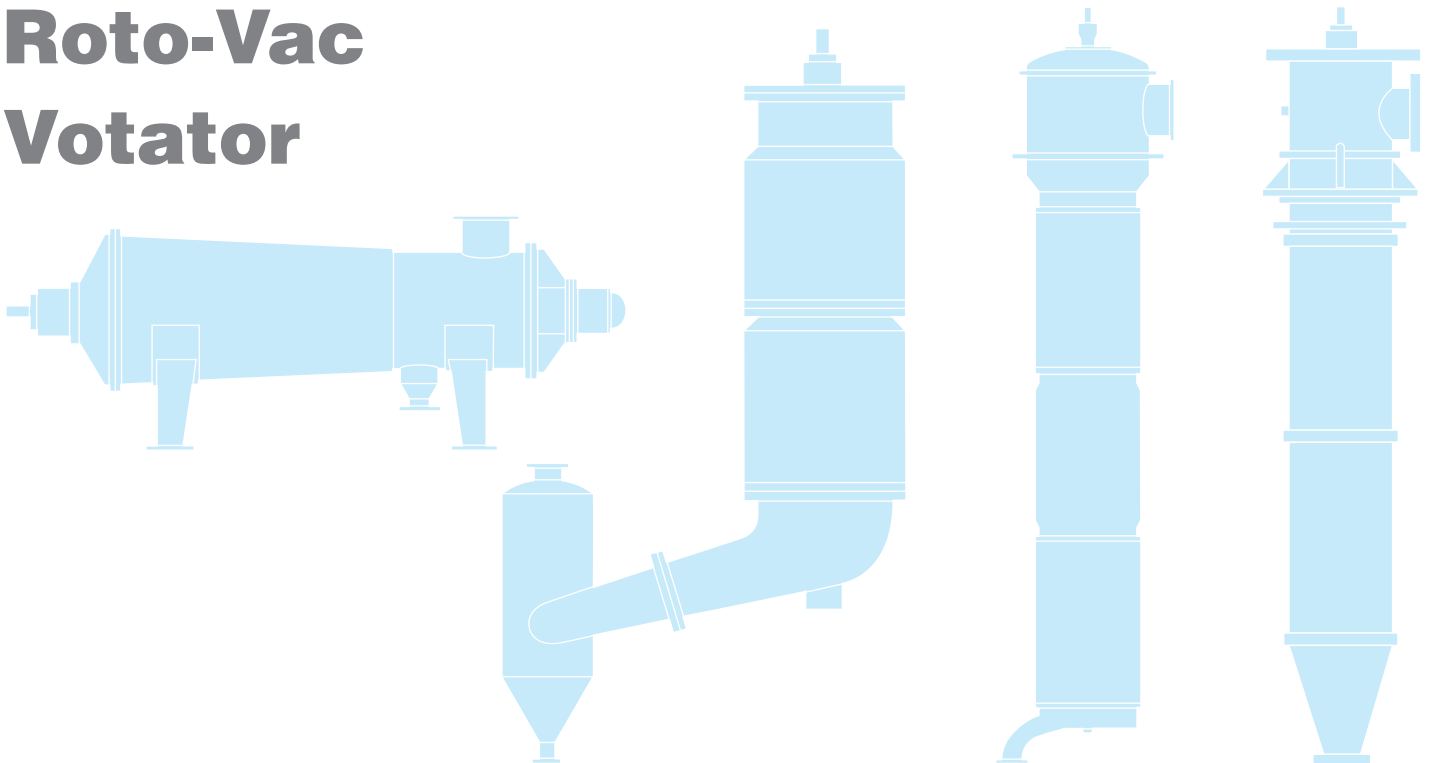
---

**LCI**  
**Luwa**  
**Buss-SMS**  
**Turba-Film®**  
**Kontro**  
**Ajust-O-Film®**  
**Rodney Hunt**  
**Roto-Vac**  
**Votator**

***If your evaporator is listed here, call LCI when you need parts or service.***

In the early 90's, LCI acquired the thin-film evaporation product programs of Cherry-Burrell, Kontro, and Blaw Knox, incorporating them into our own extensive product line. With drawings and records for these products, LCI is your best resource for parts and service.

Call us any hour, any day. We will respond quickly and competently.



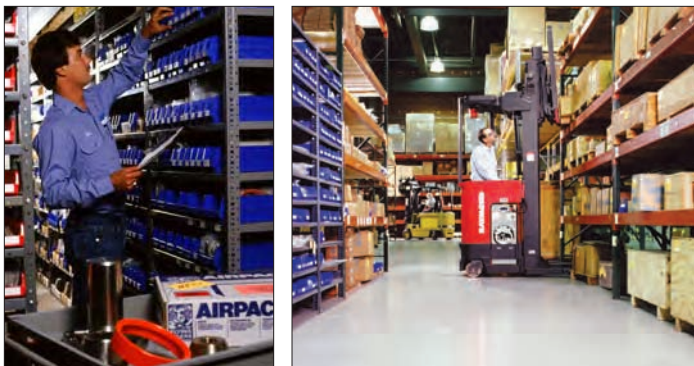
## Parts

### **Get the Right part when you need it.**

There are many reasons why LCI is your best choice for replacement parts:

- We maintain a stock of over a million dollars of normal wear parts such as shafts, seals, bearings, gaskets, and o-rings for immediate shipment.
- We can supply your needs, big or small, regardless of the age of your processor.
- We know the thin-film evaporation process. This knowledge offers an extra measure of safety in choosing exactly the right part.
- We know your processor—we maintain records on every unit sold, so we have the drawings and specifications for every component used.
- End result—you receive the best value and avoid unnecessary risk.

LCI provides you with ONE source for all your thin-film parts needs. And you gain the piece of mind that the performance of your evaporator, and therefore your process, will not be compromised by inferior or inappropriate replacement parts.



*LCI maintains a complete stock of small and large parts ready for immediate shipment.*

## Repair Service

### **We understand your need for a quick turnaround.**

LCI offers the peace of mind you can only get from the manufacturer of your evaporator.

- Complete refurbishing or rebuilding of rotors or entire units.
- We can handle any size unit.
- Many repairs/rebuilds can be done on site.
- On site vibration analysis can prevent costly unscheduled repairs.
- No surprises—we begin work only upon your acceptance of our quote.
- Because we have the drawings for your unit, you can be assured of the integrity of the repair.
- We can rebuild mechanical seals, bushings, and other major parts to save you money.
- A refurbished evaporator is usually more efficient, providing higher yields.

If you are experiencing a problem with your evaporator, whether equipment or process related, LCI is here to help solve it. We have the experience and knowledge to restore your unit to original specifications or upgrade to the latest technology.



*These before and after photos show how used feed screws can be returned to like-new condition.*

*Call these numbers when you need parts or service for your thin-film evaporator:*

*Working hours: 704-398-7836*

*After hours: 704-458-3338*

## Other LCI Services

LCI provides a flexible mix of services designed to help select, define, install, operate, and maximize your equipment investment.

- *Preliminary Evaluation*—an up-front service that determines whether LCI technology is the best fit for your application.
- *Testing Services*—our test center, the most comprehensive in the industry, is fully staffed and equipped for pilot testing. LCI's lease program also makes it possible to test at your site.
- *Systems Engineering/Supply*—a successful thin-film evaporation or drying system consists of the right thin-film processor integrated with a number of properly designed subsystems. LCI's knowledge depth and extensive experience translates into faster, more efficient design, fabrication, and installation of your system.
- *On-site Services*—LCI experts are available for troubleshooting, technical advice, training, and mechanical analysis to aid in the proper operation and maintenance of your thin-film system.

LCI is dedicated to providing the finest services available. How can we help you?



LCI Corporation  
PO Box 16348  
Charlotte NC 28297-8804  
[www.lcicorp.com](http://www.lcicorp.com)

704-394-8341

email [info@lcicorp.com](mailto:info@lcicorp.com)